

Welcome to the Snorkel Safari at Port Grenaugh



The Snorkel Trail

The trail commences from the beach. You can wade into the water to fit your fins. Avoid swimming in the path of the stream (the water will look cloudy as the fresh and sea water mix).

Keep the rock promontory to your right at the start of the trail. There are many gullies and crevasses to explore.

This bay is sheltered from the weather. In the middle is sand and you may find Dahlia anemones.

Many juvenile fish can be found among the seaweed closer into the rock line.

At the mouth of the bay, swim across to the western side and follow the rock line back to shore.

This trail will take around 45 minutes to complete. Please ensure you are wearing suitable exposure protection for this period of time.



BE SAFE

You have responsibility for your safety. You must consult a tide table and weather forecast before setting out on the trail.

This trail is available all year round but should not be used in bad weather, especially in strong SE winds, or after sunset.

Sea conditions can change quickly. Local water sports centres can advise, lead and provide equipment for trail users.

The sea at Port Grenaugh is tidal, but currents are less in the bay. Take account of the tidal flow when planning your trip. Low tides can make access difficult.

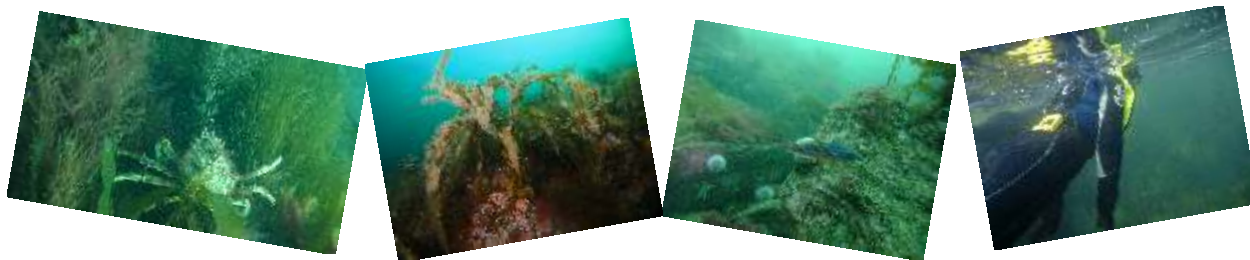
The snorkel trail is not suitable for mechanised watercraft.

Appropriate personal buoyancy is essential for trail users.

You must let someone on the shore know where you are going and what time you will be back.

Prepare for the snorkel trail, stay within your limits and the limits of your equipment.

Travel in an appropriate group size according to your abilities and the conditions.



What to look out for..

Depending on the state of the tide and the time of year, you may see Beadlet and Snakelocks anemones, Limpets, Wrasse, Shoals of Sand Eels, Lions Mane Jellyfish, Spider and Edible Crabs and Lobster.

LEAVE NO TRACE

This coastline is precious and home to a wide variety of marine species. We, as visitors to the marine world, have a responsibility to minimise our impact on the environment.

Please don't stand on the species that live on the rocks.
Please don't kick the seabed.
Spearfishing is not permitted anywhere on the Isle of Man.

Take nothing but photographs and memories, unless you want to clear away any marine litter. In which case please do!

Snorkel Safari trails are located at several sites around the Isle of Man including Niabyl, Fleshwick, Gansey Point, Port Grenaugh, Port Soderick and St Michael's Isle. You can access information about all the trails at www.visitisleafman.com/snorkelsafari



For hire of equipment or to book a guide contact Discover Diving
Marina House, Bay View Road, Port St Mary
Email: info@discoverdiving.im
www.discoverdiving.im
Phone: 01624 833008