

Welcome to the Snorkel Safari at Port Soderick

BLUE
MODERATE

The Snorkel Trail

The trail commences from the concrete jetty. Walk to the water's edge and you avoid the boulders that make beach access difficult.

Keep the cliffs to your left at the start of the trail. There are many gullies and hidden beaches to explore.

This is ideal habitat for lobsters, and there are often lobster pots around the area. Watch out for ropes and please do not disturb the pots.

The rocks under water have been beautifully sculpted by the sea. Look out for Wrasse hiding in the gullies.

When you have used half your time, turn around and retrace your route back to the jetty. Please ensure you are wearing suitable exposure protection for the time you plan to be in the water.



BE SAFE

You have responsibility for your safety. You must consult a tide table and weather forecast before setting out on the trail.

This trail is available all year round but should not be used in bad weather, especially in strong E to S winds, or after sunset.

Sea conditions can change quickly. Local water sports centres can advise, lead and provide equipment for trail users.

The sea at Port Soderick is tidal, but usually OK in the bay. Take account of the tidal flow when planning your trip. Low tides can make access difficult.

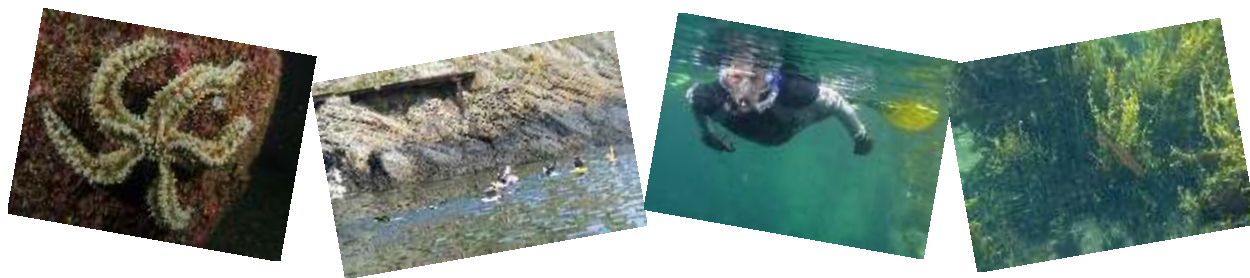
The snorkel trail is not suitable for mechanised watercraft.

Appropriate personal buoyancy is essential for trail users.

You must let someone on the shore know where you are going and what time you will be back.

Prepare for the snorkel trail, stay within your limits and the limits of your equipment.

Travel in an appropriate group size according to your abilities and the conditions.



What to look out for..

Depending on the state of the tide and the time of year, you may see Wrasse, jellyfish, thong weed, lobsters and edible crabs. Look out for the wonderfully sculpted underwater rocks too.

LEAVE NO TRACE

This coastline is precious and home to a wide variety of marine species. We, as visitors to the marine world, have a responsibility to minimise our impact on the environment.

Please don't stand on the species that live on the rocks.
Please don't kick the seabed.
Spearfishing is not permitted anywhere on the Isle of Man.

Take nothing but photographs and memories, unless you want to clear away any marine litter. In which case please do!

Snorkel Safari trails are located at several sites around the Isle of Man including Niarbyl, Fleshwick, Gansey Point, Port Grennaugh, Port Soderick and St Michael's Isle. You can access information about all the trails at www.visitisleafman.com/snorkelsafari



For hire of equipment or to book a guide contact Discover Diving
Marina House, Bay View Road, Port St Mary
Email: info@discoverdiving.im
www.discoverdiving.im
Phone: 01624 833008