

Welcome to the Snorkel Safari at Scarlett, Castletown

BLUE
MODERATE

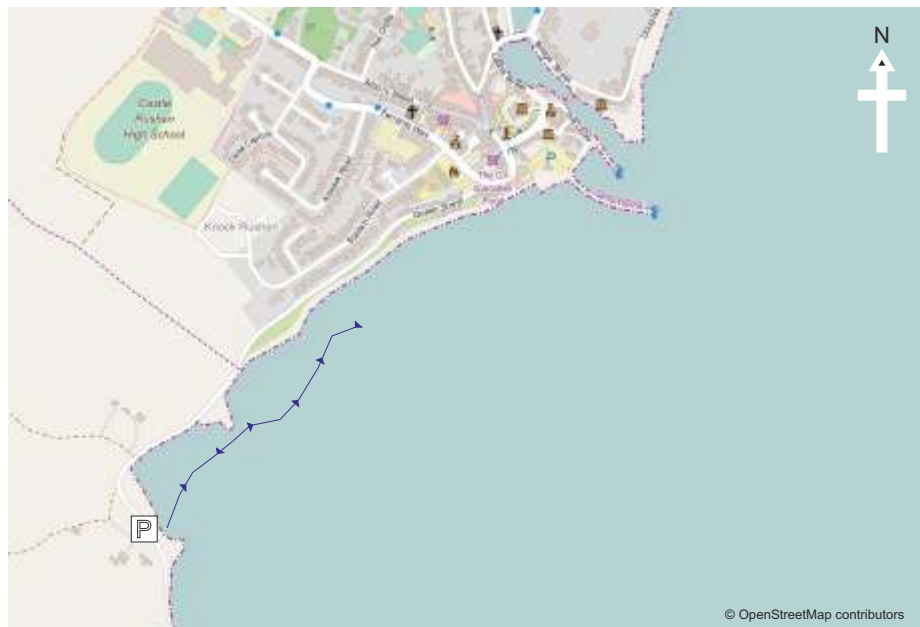
The Snorkel Trail

The trail commences from the beach. You can wade into the water to fit your fins. Watch out for slippery rocks as you walk in, and try to get to thigh deep water before you put your fins on, then you can swim.

Keep the rock promontory to your left at the start of the trail. This trail is characterised by lots of little rock gullies and overhangs with a wide variety of marine life

This bay is sheltered from Northerly and Westerly weather. During the summer months, there will be lots of seaweed which floats up like an underwater garden. During winter months when there is less weed, you can see more of the rocks. Many juvenile fish can be found among the seaweed close into the rock line.

When you have used half your time, turn around with the shore to your right and retrace your route. This trail will take around 60 minutes if you swim up towards the houses and back. Please ensure you are wearing suitable exposure protection for this period of time.



BE SAFE

You have responsibility for your safety. You must consult a tide table and weather forecast before setting out on the trail.

This trail is available all year round but should not be used in bad weather, especially in strong S or SE winds, or after sunset.

Sea conditions can change quickly. Local water sports centres can advise, lead and provide equipment for trail users.

The sea at Castletown is tidal, but currents are less in the bay. Take account of the tidal flow when planning your trip. Low tides can make access difficult.

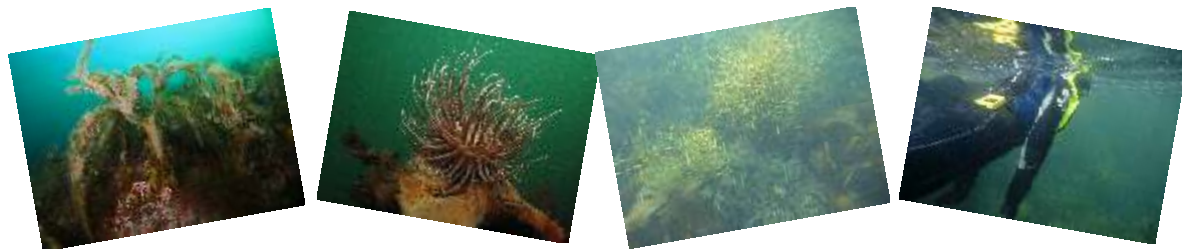
The snorkel trail is not suitable for mechanised watercraft.

Appropriate personal buoyancy is essential for trail users.

You must let someone on the shore know where you are going and what time you will be back.

Prepare for the snorkel trail, stay within your limits and the limits of your equipment.

Travel in an appropriate group size according to your abilities and the conditions.



What to look out for..

Depending on the state of the tide and the time of year, you may see Beadlet and Snakelocks anemones, Limpets, Wrasse, Shoals of Sand Eels, Lions Mane Jellyfish, Spider and Edible Crabs and Lobster.

LEAVE NO TRACE

This coastline is precious and home to a wide variety of marine species. We, as visitors to the marine world, have a responsibility to minimise our impact on the environment.

Please don't stand on the species that live on the rocks.
Please don't kick the seabed.
Spearfishing is not permitted anywhere on the Isle of Man.

Take nothing but photographs and memories, unless you want to clear away any marine litter. In which case please do!

Snorkel Safari trails are located at several sites around the Isle of Man including Niarbyl, Fleshwick, Gansey Point, Port Grennaugh, Port Soderick and St Michael's Isle. You can access information about all the trails at www.visitislofman.com/snorkelsafari



For hire of equipment or to book a guide contact Discover Diving
Marina House, Bay View Road, Port St Mary
Email: info@discoverdiving.im
www.discoverdiving.im
Phone: 01624 833008